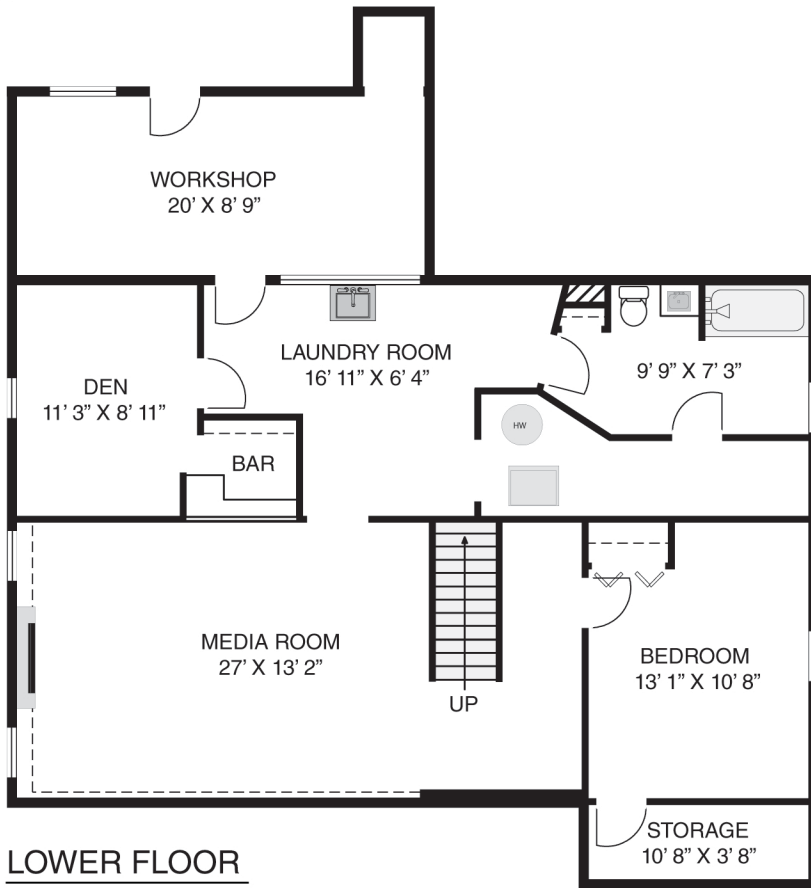
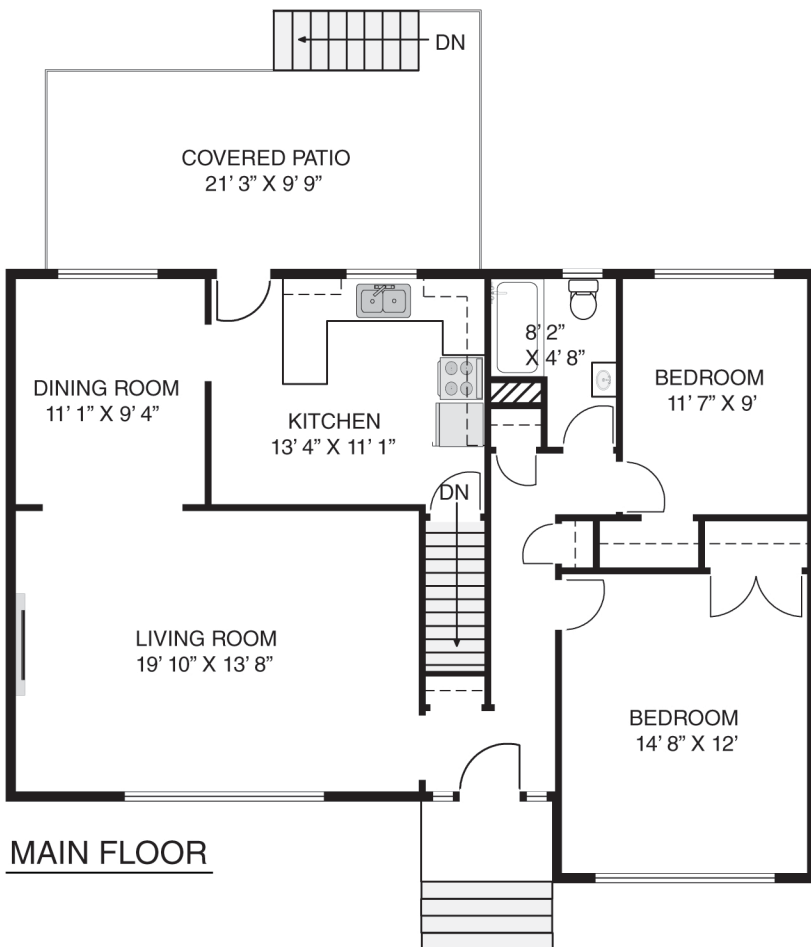
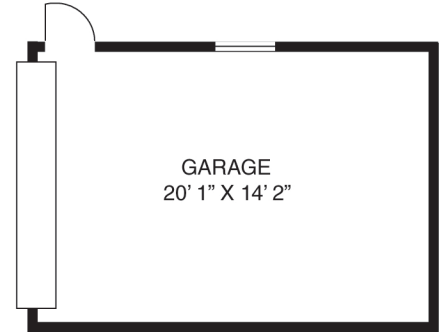




4520 PARKER ST.  
BURNABY, B.C



LOWER FLOOR



MAIN FLOOR

MAIN FLOOR:	1185 SQ.FT.
LOWER FLOOR:	1185 SQ.FT.
<b>TOTAL:</b>	<b>2370 SQ.FT.</b>
WORKSHOP:	195 SQ.FT.
PATIO:	207 SQ.FT.
GARAGE:	283 SQ.FT.

photos & floor plans by [www.barnowlphoto.com](http://www.barnowlphoto.com)

The floor plan illustration shown is an approximation of existing structures and features and is provided for convenience and marketing purposes only with the permission of the seller. This was not drawn by a professional architect and cannot be a substitute for architectural drawings. All measurements are approximate and not guaranteed to be exact or to scale. Buyer should confirm measurements using their own sources prior to purchasing or writing an offer to purchase. Not for use with appraisal/assessment